



# Terpenes Profile

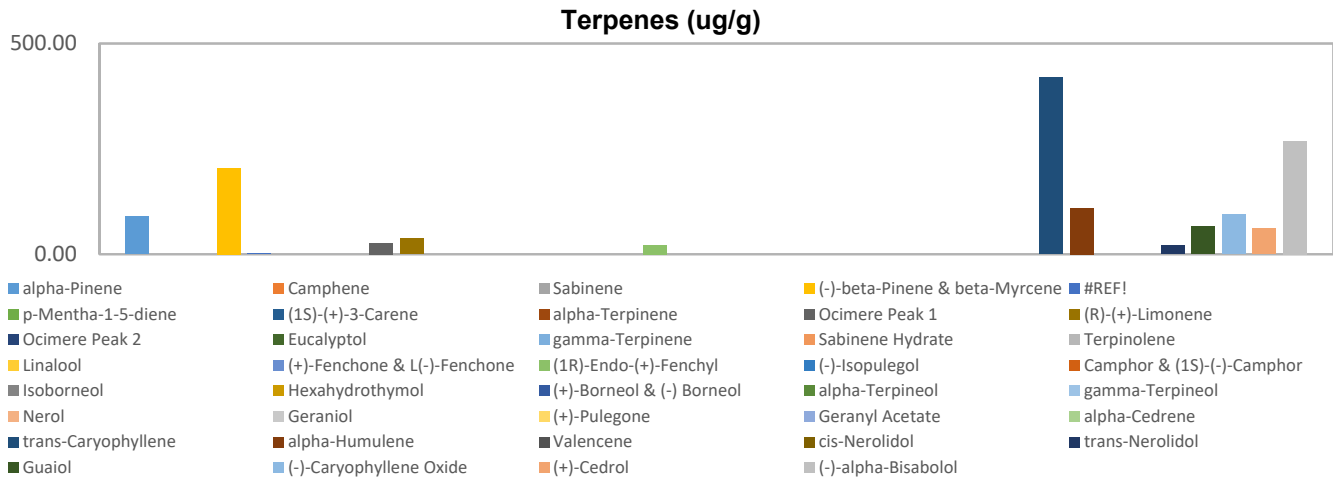
**Customer:** My Nutra  
**Customer Sample ID:** Hemp Paste  
**Laboratory Number:** 201906-0433  
**Extraction Technician:** DF  
**Analytical Chemist:** GB

Extraction Date(s)	Analysis Date(s)
6/14/2019	6/14/2019

Terpene	Results ug/g	Terpene	Results ug/g
alpha-Pinene	89.23	Isoborneol	
Camphene		Hexahydrothymol	
Sabinene		(+)-Borneol & (-) Borneol	
(-)-beta-Pinene & beta-Myrcene	204.28	alpha-Terpineol	
p-Mentha-1-5-diene		gamma-Terpineol	
(1S)-(+)-3-Carene		Nerol	
alpha-Terpinene		Geraniol	
Ocimere Peak 1	26.59	(+)-Pulegone	
(R)-(+)-Limonene	36.42	Geranyl Acetate	
Ocimere Peak 2		alpha-Cedrene	
Eucalyptol		trans-Caryophyllene	418.96
gamma-Terpinene		alpha-Humulene	109.85
Sabinene Hydrate		Valencene	
Terpinolene		cis-Nerolidol	
Linalool		trans-Nerolidol	20.81
(+)-Fenchone & L(-)-Fenchone		Guaiol	64.95
(1R)-Endo-(+)-Fenchyl	21.39	(-)-Caryophyllene Oxide	94.05
(-)-Isopulegol		(+)-Cedrol	60.90
Camphor & (1S)-(-)-Camphor		(-)-alpha-Bisabolol	268.45

Reporting Limit is roughly 40 ug/g depending on amount extracted.

Empty result indicates data is less than detection limit.



Altitude Consulting, LLC utilizes NIST traceable Reference Standards and Certified Reference Material to calibrate analytical instruments along with proven analytical methods. The methods are applied in the most ethical manner following good laboratory practice guidelines. The results of this report are based solely on the sample submitted and cannot be reproduced.

This report expires 30 days after analysis date.